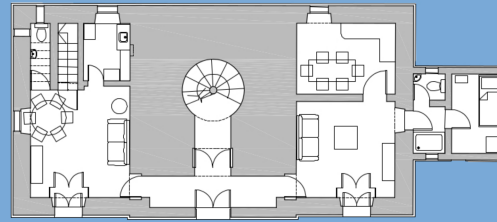
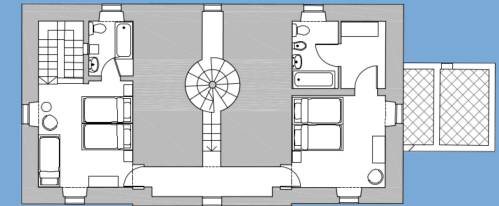


The lighthouse is split into two separate apartments with different layouts, and which can be rented individually or together. Each apartment sleeps five persons.



GROUND FLOOR PLAN
Scale 1:100



FIRST FLOOR PLAN
Scale 1:100

Apartment B is larger and consists of:
Ground Floor: a spacious entrance/ sitting room with a sofa bed sleeping two, large kitchen with dining area combined, one single bedroom, shower and toilet.

A traditional stone staircase leads to:

First Floor: which consists of one twin bedroom, a bathroom and dressing room.

All comfort commodities are supplied.



Apartment A is smaller and consists of:
On Ground Floor: spacious entrance/sitting and dining area combined with a sofa bed sleeping two, a kitchen, and a guest toilet.
Internal typical Maltese stone staircase leading to

First Floor: one bedroom that sleeps three in single beds, a bathroom and shower combined.

All comfort commodities are supplied.



For booking information call QuickLets 20108666 and ask for Madelene or e-mail madelene@quicklets.com.mt